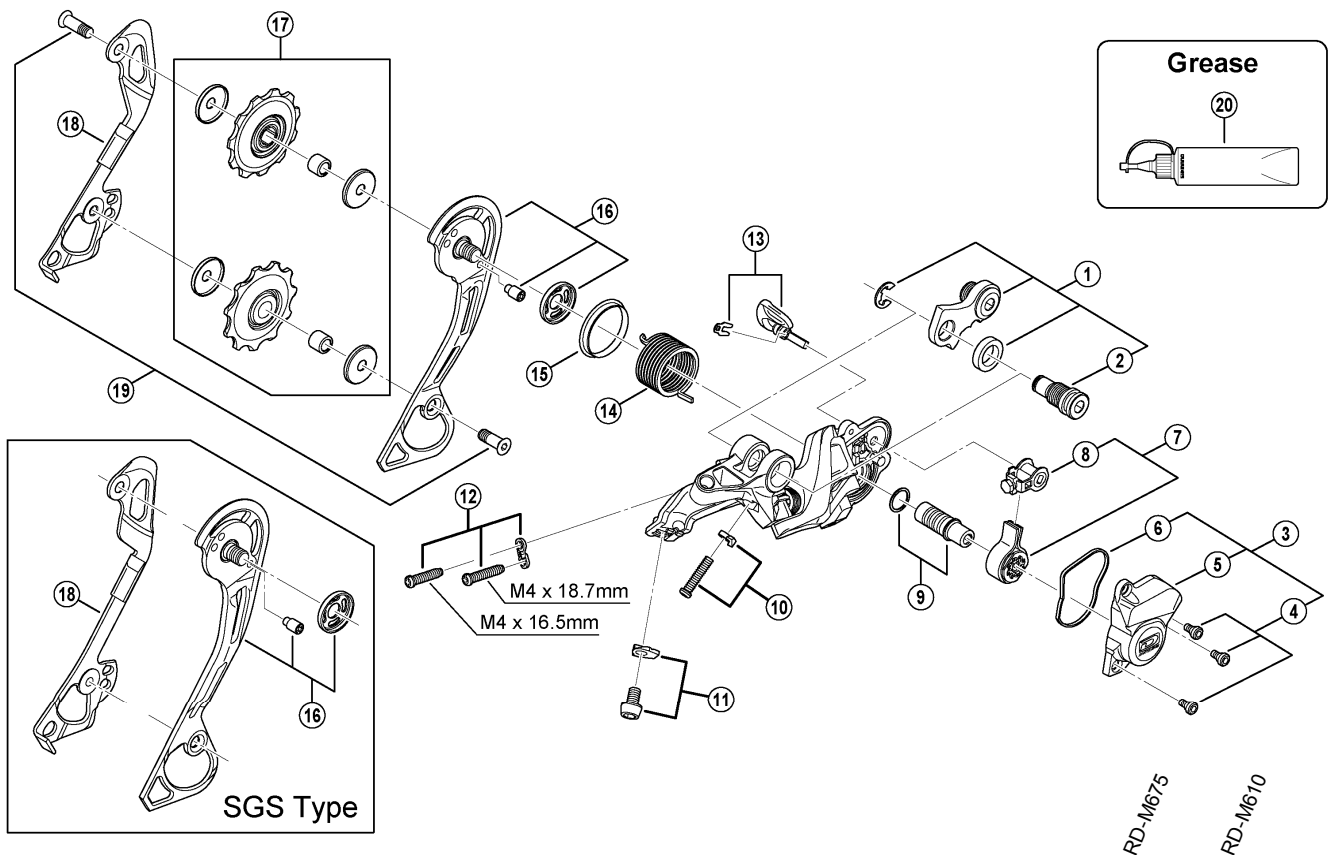


# DEORE Rear Derailleur (10-speed)

**RD-M615-S** (GS/SGS) Silver Version (Long Cage/Super Long Cage)

**RD-M615-L** (GS/SGS) Black Version (Long Cage/Super Long Cage)



ITEM NO.	SHIMANO CODE NO.	DESCRIPTION	INTERCHANGEABILITY		
1	Y50Y98010	Bracket Axle Unit (for normal type)	A	A	
2	Y50Y17000	B-Axle 2 (for Direct Mount type)	A	A	
3	Y50J98010	P-Cover Unit	B		
4	Y50J98020	P-Cover Bolt Set (3 pcs.)	B		
5	Y50J13000	P-Cover	B		
6	Y5Y219000	P-Cover Packing	A		
7	Y5Y198020	Chain Stabilizer Unit	A		
8	Y5Y198120	Cam Unit	A		
9	Y5Y198040	P-Axle Unit & Washer	A		
10	Y5XP98030	B-Tension Adjusting Screw (M4 x 18) & Plate	A	A	
11	Y5X798010	Cable Fixing Bolt (M5 x 8.5) & Plate	B	A	
12	Y5W798020	Stroke Adjusting Screws & Plate	A	A	
13	Y5Y198010	Switch Lever Unit & Fixing Plate	A		
14	Y5XD19000	P-Tension Spring	A		
15	Y5XD15000	P-Seal Ring	A		
16	Y50Z98020	Outer Plate Assembly (Silver/GS-Type)	A		
	Y50Z98030	Outer Plate Assembly (Silver/SGS-Type)	A		
	Y50J98030	Outer Plate Assembly (Black/GS-Type)	B		
	Y50J98040	Outer Plate Assembly (Black/SGS-Type)	B		
17	Y5XU98030	Guide & Tension Pulley Unit	B	A	
18	Y50H09000	Inner Plate (GS-Type)	B	A	
	Y50H10000	Inner Plate (SGS-Type)	B	A	
19	Y50J98070	Pulley Bolt (2 pcs.)	A		
20	Y04120800	Grease for Stabilizer (Net. 100g)	A		

A: Same parts.

B: Parts are usable, but differ in materials, appearance, finish, size, etc.

Absence of mark indicates non-interchangeability.

Mar.-2013-3520

© Shimano Inc. A

Specifications are subject to change without notice.

**SHIMANO**