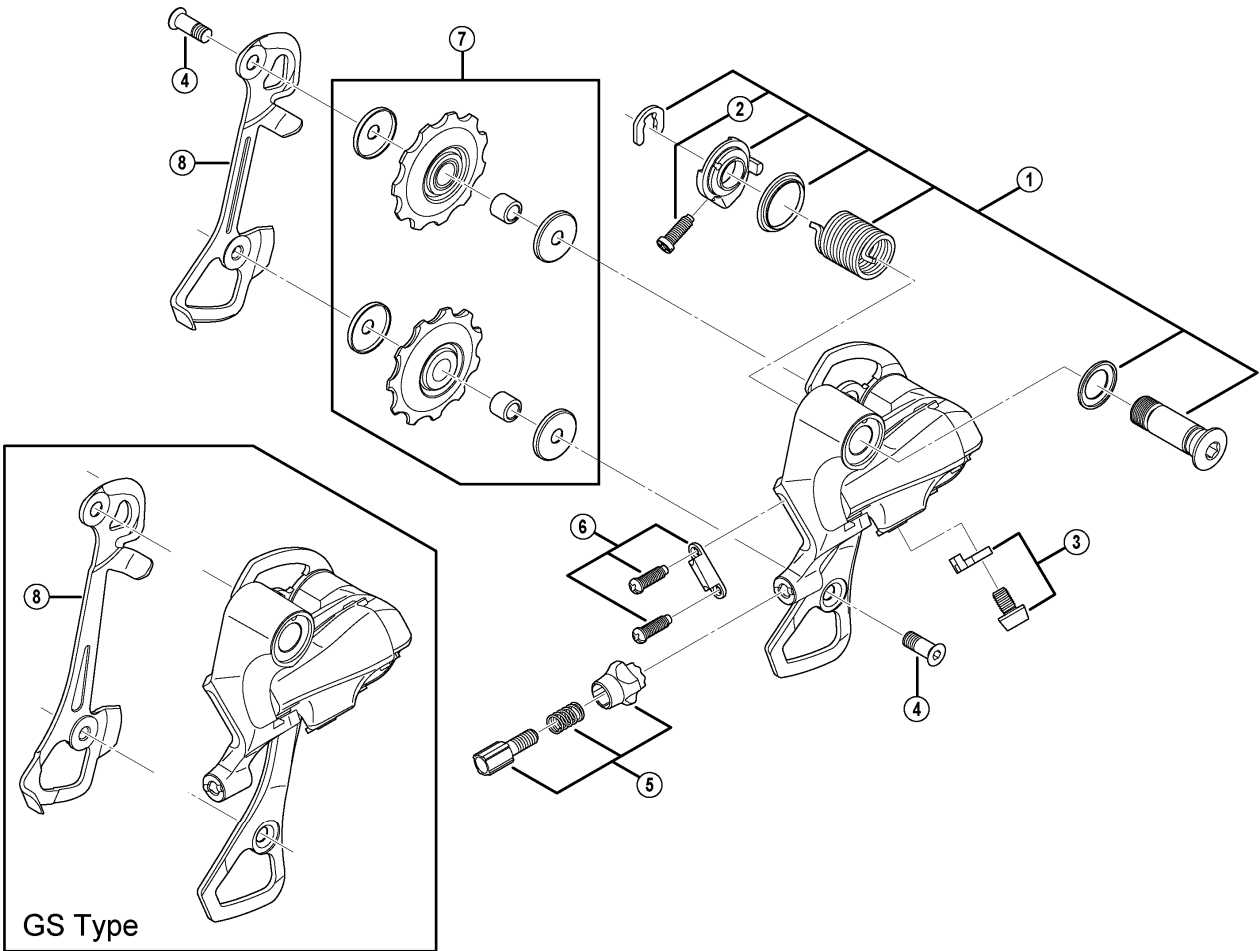


CLARIS Rear Derailleur

RD-2400 (SS) Short Cage

RD-2400 (GS) Long Cage



ITEM NO.	SHIMANO CODE NO.	DESCRIPTION	INTERCHANGEABILITY		
			A	B	
1	Y5YB98010	B-Axle Assembly			
2	Y556250D0	B-Tension Adjust Bolt	A		
3	Y5XL98010	Cable Fixing Plate & Bolt			
4	Y5XG16100	Pulley Bolt	A		
5	Y5XG98040	Cable Adjusting Bolt unit	A		
6	Y5Y498030	Stroke Adjust Screws (M4 x 12) & Plate	A		
7	Y5TT98020	Tension & Guide Pulley Unit	A		
8	Y5Y408000	Inner Plate (SS-Type)	A		
	Y5Y409000	Inner Plate (GS-Type)	A		

A: Same parts.
B: Parts are usable, but differ in materials, appearance, finish, size, etc.
Absence of mark indicates non-interchangeability.