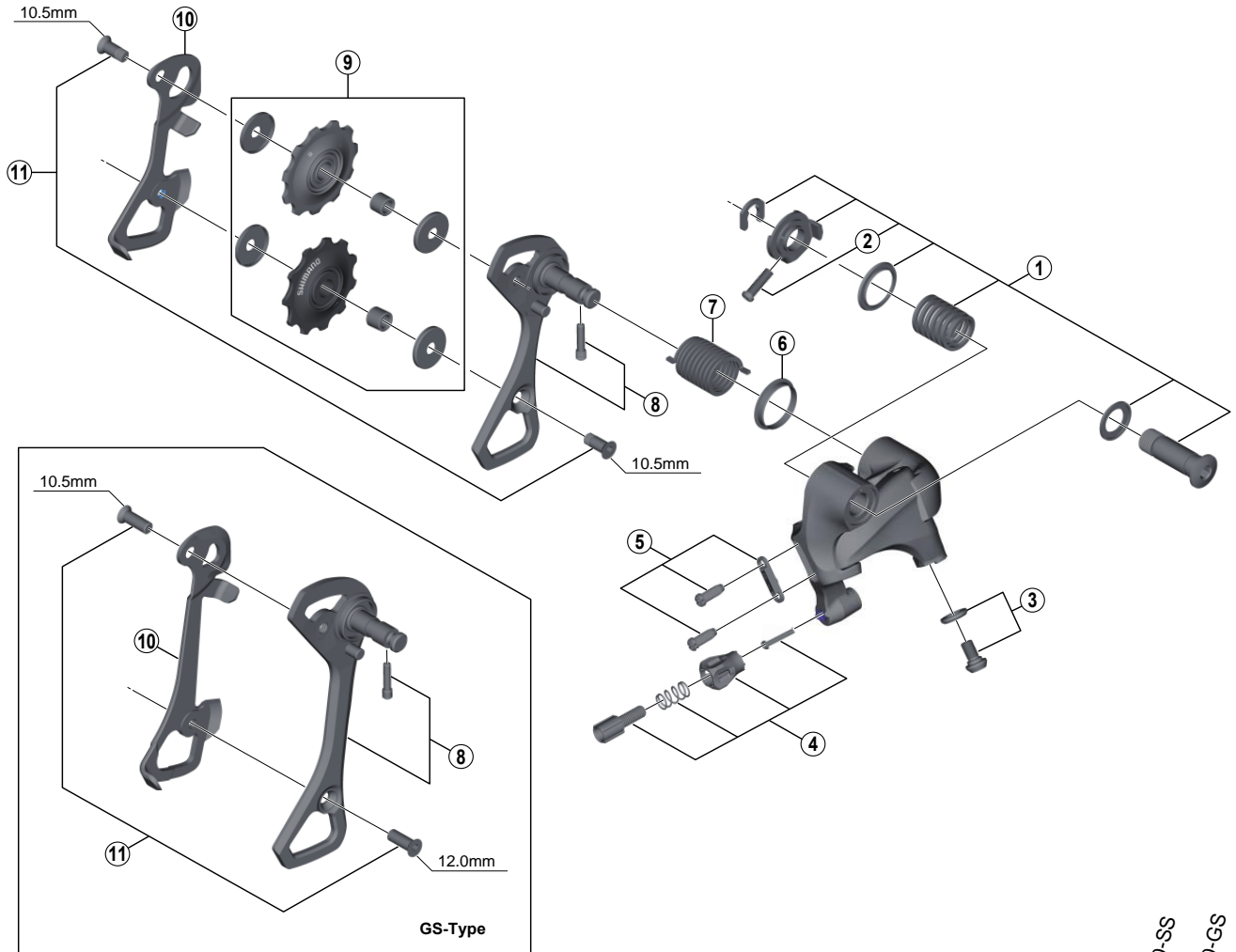


# SHIMANO 105 Rear Derailleur (11-speed)

## RD-5800-S (SS/GS) Silver Version (Short Cage/Long Cage)

## RD-5800-L (SS/GS) Black Version (Short Cage/Long Cage)



RD-6800-SS  
RD-6800-GS

ITEM NO.	SHIMANO CODE NO.	DESCRIPTION	INTERCHANGEABILITY	
1	Y5YE98010	B-Axle Assembly		
2	Y5YE18000	B-Tension Adjusting Screw (M4 x 13.5)	B	B
3	Y5YE98020	Cable Fixing Bolt (M5 x 9.2) & Plate	B	B
4	Y5YE98030	Cable Adjusting Bolt Unit	B	B
5	Y5YC98040	Stroke Adjusting Screws (M4 x 11.5) & Plate	A	A
6	Y5UC14000	P-Seal Ring		
7	Y5XV17000	P-Tension Spring		
8	Y5YE98040	Outer Plate & Plate Stopper Pin for SS-Type		
	Y5YE98050	Outer Plate & Plate Stopper Pin for GS-Type		
* 9	Y5XE98030	Tension & Guide Pulley Set for SS-Type		
	Y5YE98090	Tension & Guide Pulley Set for GS-Type		
10	Y5XH08000	Inner Plate for SS-Type		
	Y5XV09000	Inner Plate for GS-Type		
11	Y5YE98120	Pulley Bolt 10.5mm (2 pcs.) for SS-Type		
	Y5YE98130	Pulley Bolt 10.5mm & 12.0mm for GS-Type		B

A: Same parts.

B: Parts are usable, but differ in materials, appearance, finish, size, etc.

Absence of mark indicates non-interchangeability.

Jan.-2016-3712B

© Shimano Inc. H

Specifications are subject to change without notice.

# SHIMANO